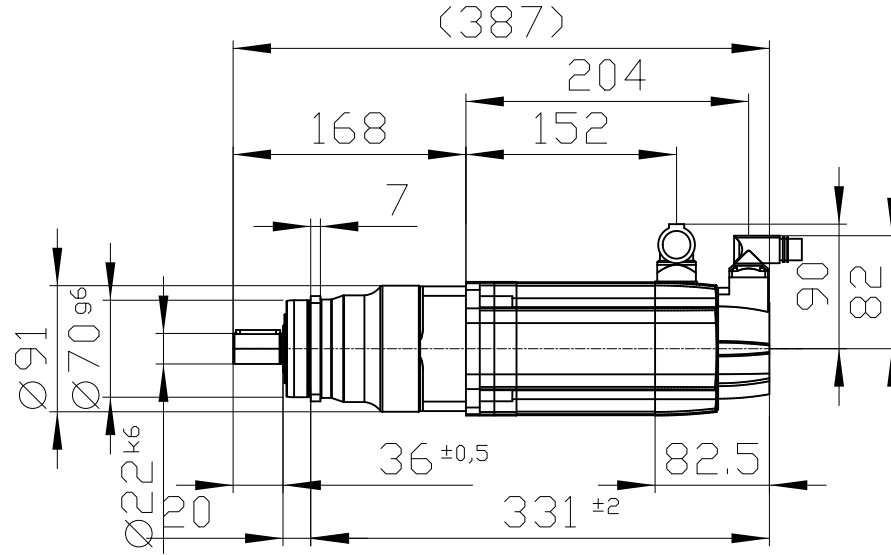
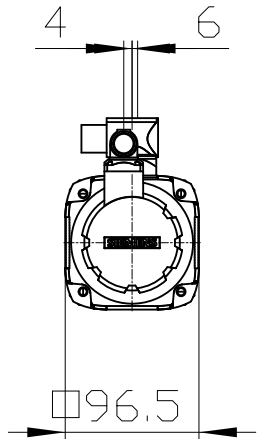


Confie a titre de secret d'entreprise. Tous droits réservés.  
Confidado como secreto industrial. Nos reservamos todos los derechos  
Comunicado como segredo empresarial. Reservados todos os direitos

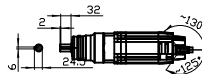
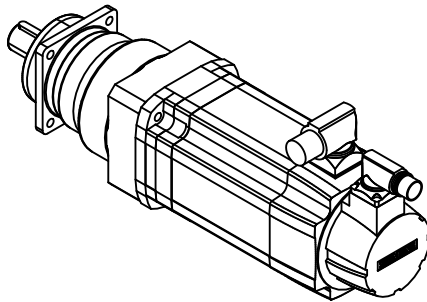
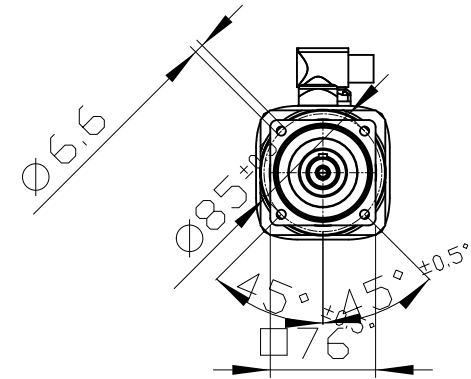
Weitergabe sowie Vervielfältigung dieser Unterlage, Verwer-  
tung und Mitteilung ihres Inhalts nicht gestattet, soweit nicht  
ausdrücklich zugestanden. Zuwiderhandlungen verpflichten  
zu Schadenersatz. Alle Rechte vorbehalten, insbesondere fuer  
den Fall der Patenterteilung oder GK-Entragung.

The reproduction or use of this document or its  
contents is not permitted without express written authority.  
Offenders will be liable for damages. All rights, including rights  
created by patent grant or registration of a utility model or design,  
are reserved.

Copyright© Siemens AG 2005  
Cada-drawing do not make any  
manual changes



center hole  
DIN 332/2 M8



Connector size 1 = M23;  
6-pole for power and brake



Connector size M17, 10-pole

	-	
	-	
Unit	mm [in]	1FT 7044-5AF 71-0LG1-Z
Date	12/4/23	
SIEMENS AG		J09+L03
-		DT